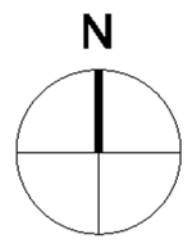


# Landscape Masterplan

... retaining existing trees,  
creating new landscapes...



'fritillary' meadow

- Key**
- P1: Structure planting
  - P1E: Coppiced Hazel matrix
  - P2: Specimen trees
  - P3: Avenue planting
  - P4: Group of trees
  - P5: Restored field boundary
  - P6: Wetland
  - P7: Meadow
  - P8: Grass
  - P9: Bulbs
  - PA1, PA2, PA3, PA4: Paving materials
  - Ponds with permanent water
  - Boardwalk
  - Site Boundary
  - Heritage trail
  - Existing planting to be retained



new woodlands  
to Spine Road

playspaces,  
woodlands,  
viewing point  
(for St. Mary's Church)



wetland

ecological corridor,  
new woodlands

wildlife  
pond

gateway to Billingshurst

gateway to Billingshurst

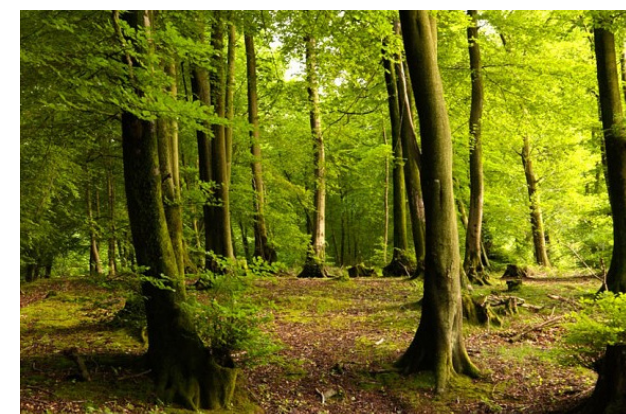
woodland,  
playspace,  
water attenuation



General meadow



Exotic meadow



Woodland



Structure planting



# Ecology Mitigation Plan

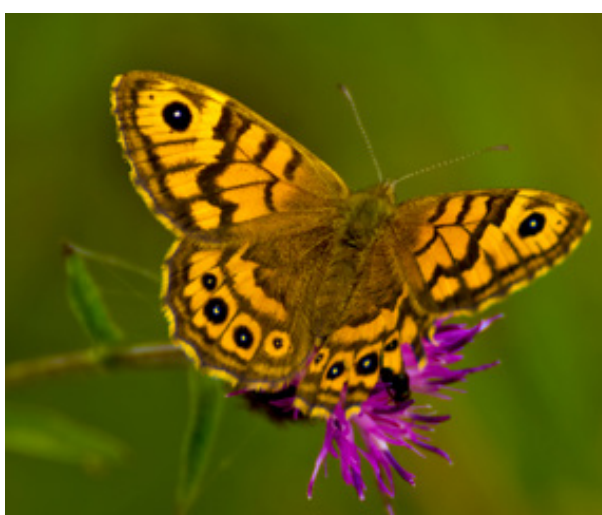
## ... design for improved nature



Greater Spotted Woodpecker



Dormouse



Wall Butterfly



Demoiselle



Barn Owl



Common Pipistrelle



Common Lizard

### Habitat Creation

- ① New coppiced Hazel to support Dormouse
- ② Dead-wood retained as log-piles for saproxylic organisms
- ③ Bird nest box to provide nesting opportunities
- ④ Native wildflower grassland to improve floristic diversity and offer biodiversity gains.
- ⑤ Bat boxes to create roosting opportunities
- ⑥ Dark corridors to support bats
- ⑦ A diverse range of native plants, nectar rich species and night flowering species as a foraging resource for butterflies and moths
- ⑧ Dead-wood, including a trunk of a fallen mature tree, to be retained for saproxylic organisms
- ⑨ New reptile habitat connected to Ducksmoor Copse to the east. A mix of grassland seeds and scrub pockets to aid microclimates; Hazel for Dormouse
- ⑩ 5m buffer of native shade tolerant grassland created adjacent to hedgerow H11. Disturbance protection for Dormouse and habitat provision for small mammals and invertebrates
- ⑪ New trees for birds and bats to encourage nesting, foraging and commuting
- ⑫ Wet grassland
- ⑬ Mature tree planting on either side of the spine road to act as a 'hop over' for bats
- ⑭ Retention of hedgerow with bolster planting to improve biodiversity, strength structure and function as a wildlife corridor
- ⑮ New aquatic habitats

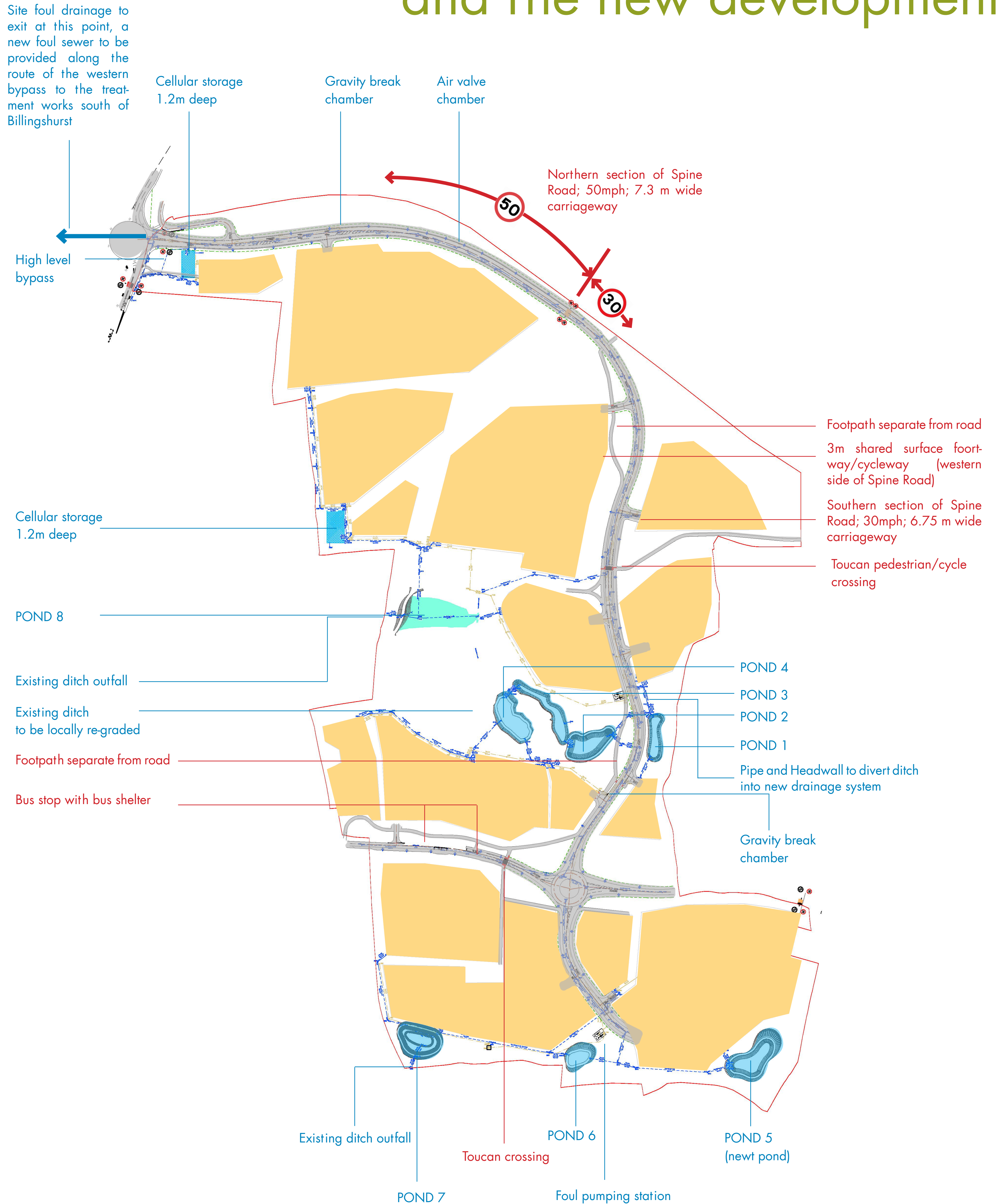
### Habitat Management

- A Checks of bat and bird boxes completed every three years, with replacements, if necessary
- B Retained trees subject to protective measures
- C Standing dead-wood left *in situ* where not a risk to the public
- D Management of wildflower grassland to maintain floristic diversity
- E Sinuous margins to offer a refuge for small mammals and provide ecological gains
- F Removal of suitable nesting habitat only completed outside nesting season or following confirmation of no nesting birds present
- G All arisings from grassland management to be removed to avoid nutrient enrichment at the detriment of floristic diversity
- H Coppicing of Hazel over time to create stools of significant age/structure in aid of hibernation for Dormouse



# Infrastructure - roads & drainage

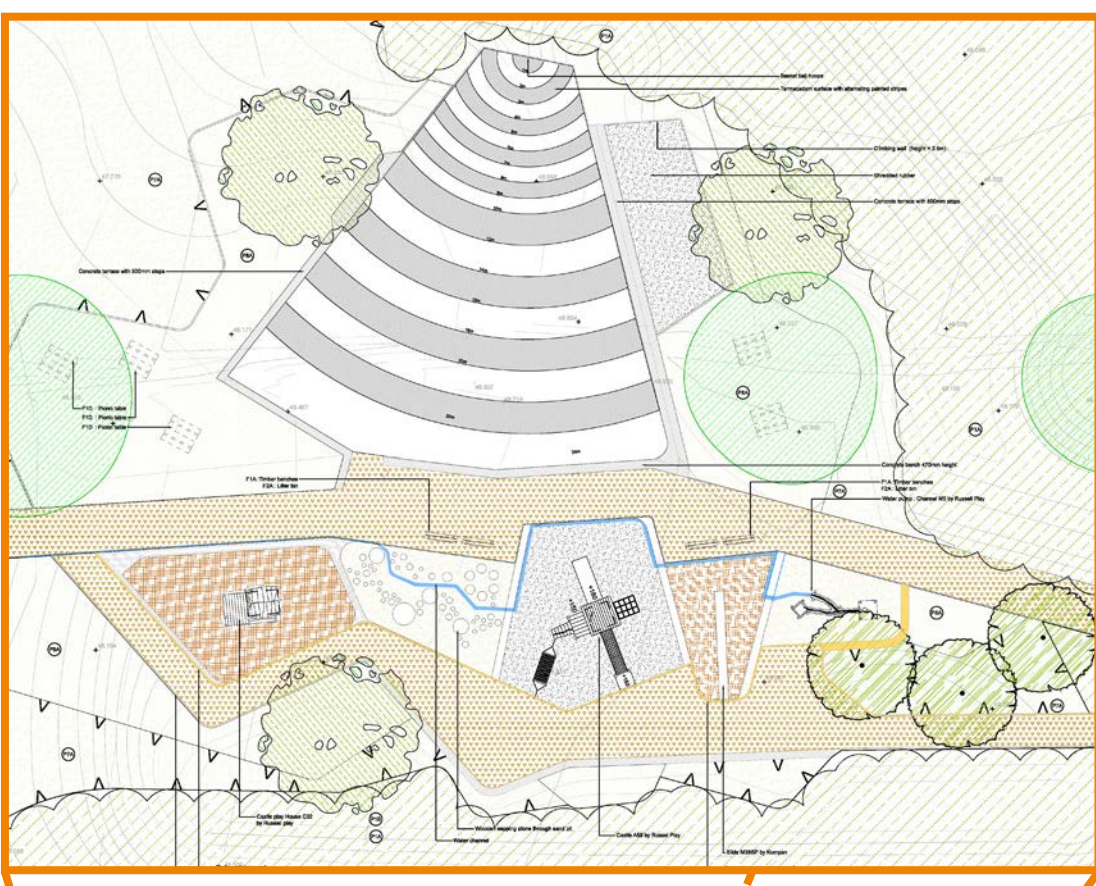
## ... new infrastructure serving Billingshurst and the new development



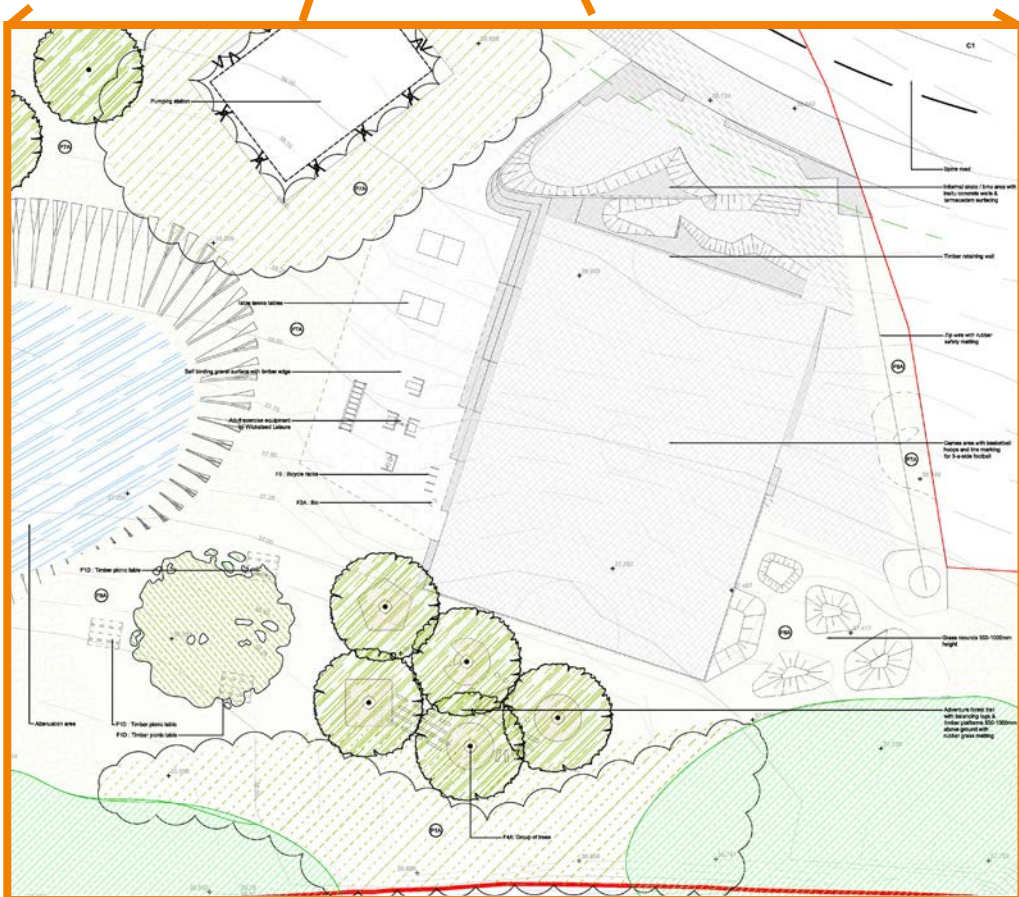


... stimulating play

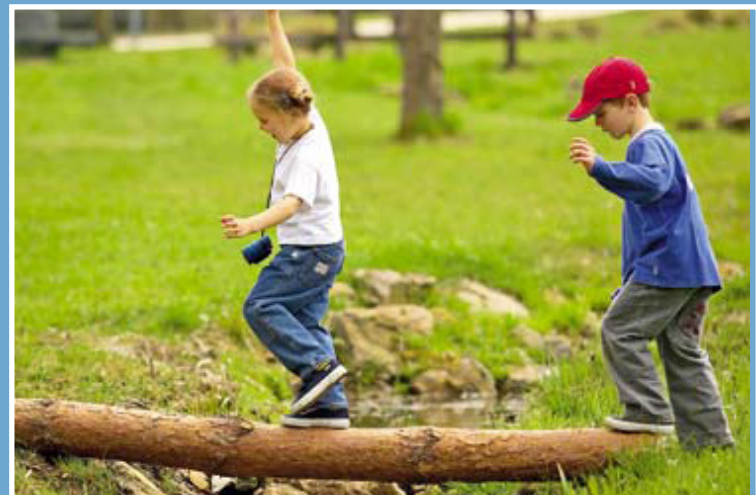
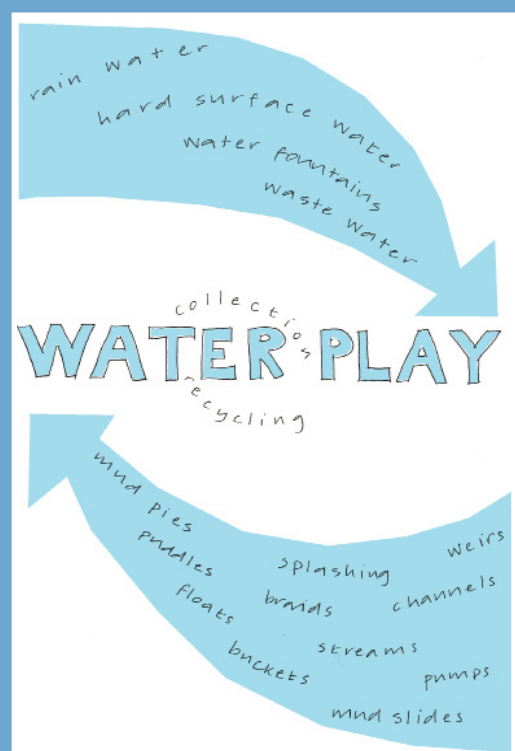
### Ball games, climbing and castle play



- boardwalks as art, viewing places and nature conservation interpretation



### Skate park, ball game and adventure trail



- 1 Gateway timber structure by local artists
- 2 View of St. Mary's Church reinterpreted
- 3 History and interpretation of 'medieval' field pattern and new fritillary meadow
- 4 'windmill' interpretation
- 5 view to landscape interpreted
- 6 adjacent to school nature conservation interpreted



# Water & Art

... an enjoyable place to live

**Water** is a natural part of the new development, for nature conservation, rainwater run-off retention, and for **enjoyment**. Combined with the Heritage Trail and **a network of art** on the site, these things will help make a rich and exciting place to live. We are still formulating our **art policy** and we would like to hear your views. We believe the art should relate to the **natural environment** and the **history** of the site.

- Water features in Playgrounds
- Heritage Boards along the Heritage Trail
- Wooden-carved sculptures by local artists along the Heritage Trail

Please complete the Public Art Questionnaire and leave it in the collection box.



New wetlands and boardwalks at a recent similar residential development

## What do **you** think?