

Billingshurst Neighbourhood Plan

**Pre-Submission (Regulation 14) Consultation Draft
Sustainability Statement**

July 2019

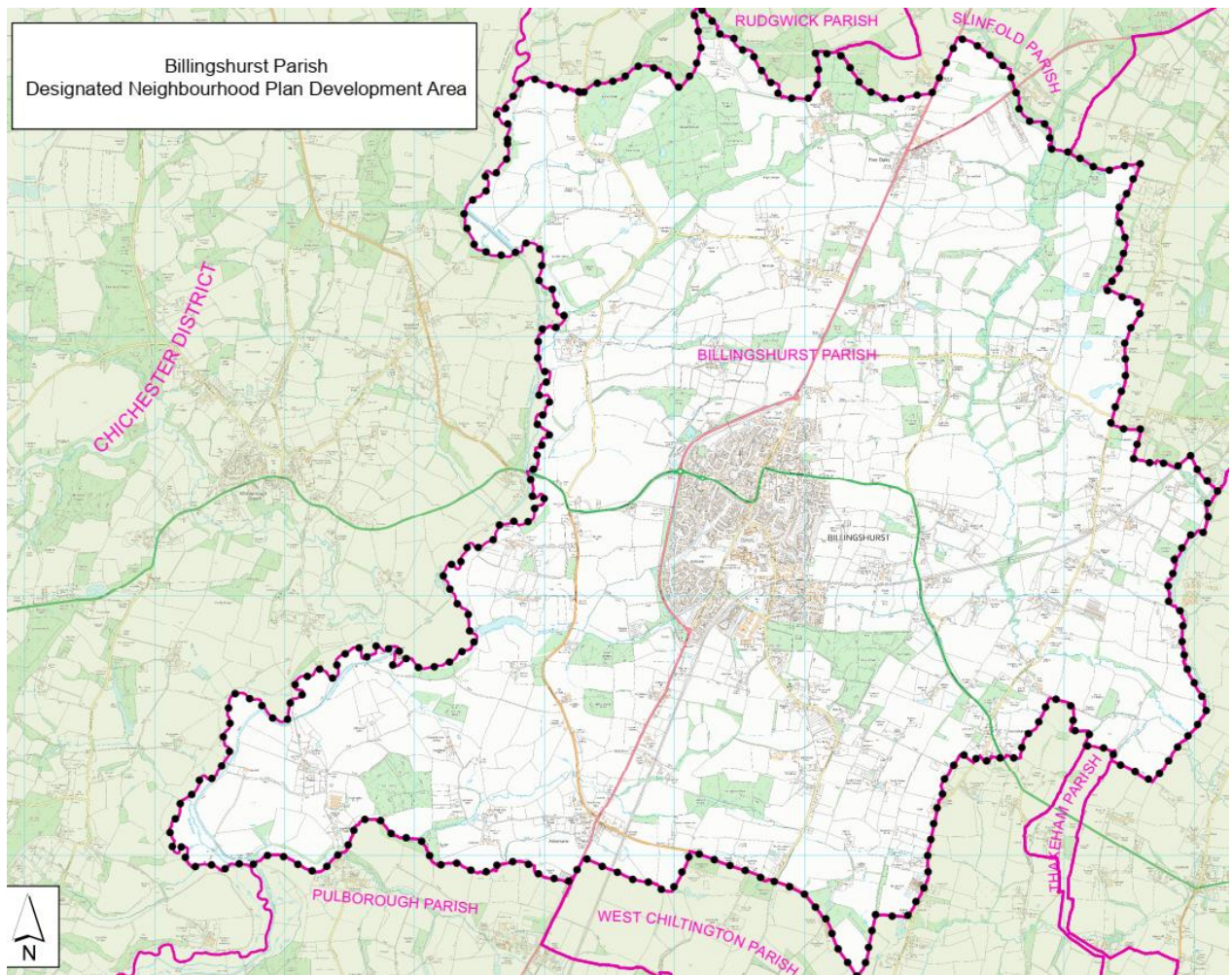
1. Introduction

- 1.1. This Sustainability Statement has been prepared to support the Billingshurst Neighbourhood Plan ('the Plan'). It demonstrates how the Plan contributes towards the achievement of sustainable development.
- 1.2. Sustainable development is about ensuring a better quality of life for everyone, now and for generations to come. It is about considering the long-term environmental, social and economic issues and impacts in an integrated and balanced way. The UK Government has set five guiding principles to achieve the sustainable development purpose. These principles form the basis for policy in the UK and are as follows:
 - Living within environmental limits
 - Ensuring a strong, healthy and just society
 - Building a strong, stable and sustainable economy
 - Promoting good governance
 - Using sound science responsibly
- 1.3. One of the means by which sustainable development can be achieved is through the land-use planning process. The Plan can help to achieve sustainable development as it aims to ensure that development meets the needs of people living and working in the Neighbourhood Area, while at the same time helping to ensure that adverse environmental impacts are minimised.

The Plan

- 1.4. The designated Neighbourhood Plan Area - contiguous with the parish boundary - is shown in Figure 1.1.

Figure 1.1: Billingshurst Neighbourhood Area



- 1.5. The Plan has been developed by members of the Plan Steering Group following an extensive programme of engagement with the local community. The Plan’s vision for development of the area up to 2031 is as follows:

‘By 2031, Billingshurst Parish will have evolved to provide a high standard of 21st Century living for those in the village and in the rural areas of the parish.

New housing will deliver character with provision for all ages and abilities whilst transport and technology supports and connects our communities. The High Street and other businesses will be thriving and local employment opportunities will have increased, in part by supporting new premises but also wider services to meet the needs of an enlarged local population.

All this will be achieved at the same time as protecting and enhancing our heritage and natural environment, and providing for the wellbeing and enjoyment of residents and visitors, both then and for future generations.’

- 1.6. In order to deliver the vision, the Plan sets out to meet a series of objectives:
- OBJECTIVE 1: Ensure new housing reflects the high quality local vernacular in the parish in terms of building style and materials and maximises sustainable energy as part of housing design.
 - OBJECTIVE 2: Ensure that the provision of local infrastructure and facilities including medical provision and schools is adequate to address the needs of existing and future residents.
 - OBJECTIVE 3: Improve transport and movement, in particular through non-car modes, specifically ensuring there is a safe environment for pedestrians and cyclists as well as motorists.
 - OBJECTIVE 4: Strengthen, support and promote local economic activity in all retail, industrial, commercial and professional activities and ensure they are focused in appropriate areas of the parish.
 - OBJECTIVE 5: Ensure that development is sensitively designed to be attractive, to minimise flood risk, mitigate climate change, promote biodiversity and reduce our carbon footprint.
 - OBJECTIVE 6: Protect green spaces of value to the community and maintain a high quality natural and historic environment, in particular protecting buildings of local historic interest.

Policy context

- 1.7. The Plan has been prepared having regard to national policy and to be in general conformity with the strategic policies of the local development plan. At the national level, the National Planning Policy Framework (NPPF) establishes the scope and purpose of neighbourhood plans. At the local level, the development plan comprises the Horsham District Planning Framework (HDPF).

Strategic Environmental Assessment and Habitats Regulations Assessment

- 1.8. Horsham District Council (HDC) has issued a 'standard' screening for all neighbourhood plans within the district. This states that if a neighbourhood plan is allocating sites for development then it could have a significant environmental impact, therefore a Strategic Environmental Assessment (SEA) is required. The Billingshurst Plan does not allocate sites and it has been confirmed by HDC that an SEA is not required.
- 1.9. Separately, a screening opinion in respect of Habitats Regulations Assessment (HRA) determined that an is not required. This is subject to consultation with relevant stakeholders including Natural England, which will be undertaken as part of the Pre-Submission (Regulation 14) Consultation.

2. Sustainability Assessment

2.1 In order to demonstrate that the Plan contributes to the achievement of sustainable development, it is necessary to identify sustainability objectives to enable an assessment to be made of the Plan. Whilst there are objectives established at the strategic level through the HDPF, for a neighbourhood plan that must confine the matters it deals with to local issues, these are most appropriately established at the local level. Accordingly, the sustainability objectives of the Plan have been taken directly from the HDPF Sustainability Appraisal Environmental Report (November 2015).

2.2 The qualitative scoring system used to assess the likely effects is shown below:

++	The policy is likely to contribute significantly towards the sustainability objective
+	The policy is likely to contribute positively towards the sustainability objective, although not significantly
0	The policy is considered to have no significant positive or negative effect
-	The policy is likely to detract from the achievement of the sustainability objective, although not significantly
--	The policy is likely to detract significantly from the achievement of the sustainability objective
?	The policy has an uncertain relationship to the sustainability objective. Alternatively, insufficient information may be available to enable an assessment to be made.

2.3 Table 2.1 shows the assessment and provides a commentary as to which policies in the Plan are relevant to each of the HDPF Sustainability Assessment (SA) criteria.

2.4 Table 2.1 shows that all of the policies in the Plan will either have no significant effect (positive or negative), a positive effect or a significant positive effect.

Table 2.1: Assessment of policies in the Billingshurst Neighbourhood Plan against HDPF Sustainability Appraisal Objectives

HDPF SA Objective	Relevant Billingshurst Neighbourhood Plan objective(s)	Assessment	Commentary
To provide high quality, affordable housing for all, which includes a range of size, types and tenures and is appropriate to local needs, and those in the wider subregion	Ensure new housing reflects the high quality local vernacular in the parish in terms of building style and materials and maximises sustainable energy as part of housing design	+	<p>Policy BILL2 (Housing Character and Design) encourages dwelling design – particularly bungalows - to be suitable for older people and to meet space and accessibility standards of Lifetime Homes standard.</p> <p>Policy BILL2 (Housing Character and Design) requires high quality design which increases community cohesion through the development of green open spaces in central areas.</p>
To ensure everyone has access to appropriate, educational facilities and training opportunities.	Ensure that the provision of local infrastructure and facilities including medical provision and schools is adequate to address the needs of existing and future residents.	0	The Plan recognises the importance of delivering sufficient education provision. It has a specific aim (Aim 2) to work with the providers to ensure the necessary provision of education facilities. However this is not a planning policy.
To ensure everyone has access to appropriate, affordable community facilities including childcare, leisure and recreation facilities, green infrastructure and public open space, together with opportunities to enjoy the night time economy	<p>Ensure that the provision of local infrastructure and facilities including medical provision and schools is adequate to address the needs of existing and future residents.</p> <p>Strengthen, support and promote local economic activity in all retail, industrial, commercial and professional activities and ensure they are focused in appropriate areas of the parish.</p> <p>Protect green spaces of value to the community and maintain a high quality natural and historic environment, in particular protecting buildings of local historic interest.</p>	++	<p>Policy BILL4 (Provision of Leisure and Recreation Facilities) identifies specific community infrastructure requirements and locations which new development should contribute towards.</p> <p>Policy BILL6 (Retaining and Enhancing the Vitality and Viability of Billingshurst Village Centre) recognises the importance of the village centre and its shops and services. It enables a flexible approach so that shops can be used for other uses on a temporary basis, including for cultural, creative and leisure uses.</p> <p>Policy BILL7 (Public Realm and Movement in Billingshurst Village Centre) seeks to protect and enhance the public realm in the village in order to enhance the experience of shopping and leisure activities there.</p> <p>Policy BILL9 (Tourism-Related Development and the Provision of Tourist Accommodation) seeks to attract and expand tourist facilities in the parish.</p> <p>Policy BILL13 (Local Green Spaces) protects a series of green spaces and</p>

HDPF SA Objective	Relevant Billingshurst Neighbourhood Plan objective(s)	Assessment	Commentary
			that special to the local community, ensuring their continuing use and enjoyment by local people.
<p>To protect existing health care facilities and improve healthcare provision. To improve health by encouraging healthy lifestyles, promoting health education improving access to health care facilities.</p>	<p>Ensure that the provision of local infrastructure and facilities including medical provision and schools is adequate to address the needs of existing and future residents.</p> <p>Protect green spaces of value to the community and maintain a high quality natural and historic environment, in particular protecting buildings of local historic interest.</p>	+	<p>The Plan recognises the importance of delivering sufficient medical provision. It has a specific aim (Aim 2) to work with the providers to ensure the necessary provision of medical facilities. In respect of medical provision, this relates to the proposed extension to the existing surgery. However this is not a planning policy.</p> <p>Policy BILL13 (Local Green Spaces) protects a series of green spaces and that special to the local community, ensuring their continuing use and enjoyment by local people for outdoor activities.</p> <p>Policy BILL4 (Provision of Leisure and Recreation Facilities) identifies specific community infrastructure requirements, including the need to enhance healthy activities such as natural play and formal sports.</p> <p>Policy BILL10 (Protection and Enhancement of Key Movement Routes) identifies a series of routes which should be protected and enhanced for walking and cycling.</p>
<p>To create a safe and secure environment (which minimises antisocial behaviour) and reduces the fear of crime.</p>	N/a	0	N/a
<p>To positively promote equal opportunities for all sections of the community.</p>	N/a	0	N/a
<p>To protect and enhance the quality and level of biodiversity and natural habitats within the District and where appropriate provide</p>	<p>Ensure that development is sensitively designed to be attractive, to minimise flood risk, mitigate climate change, promote biodiversity and reduce our carbon footprint.</p>	+	<p>Policy BILL13 (Local Green Spaces) protects a series of green spaces, many of which have significant biodiversity value.</p> <p>Policy BILL14 (Multi-Value Sustainable Drainage Systems) seeks to ensure that SuDS provision maximises its</p>

HDPF SA Objective	Relevant Billingshurst Neighbourhood Plan objective(s)	Assessment	Commentary
new green infrastructure.	Protect green spaces of value to the community and maintain a high quality natural and historic environment, in particular protecting buildings of local historic interest.		biodiversity value through creative design.
To conserve and enhance the quality of landscape and townscape character.	Protect green spaces of value to the community and maintain a high quality natural and historic environment, in particular protecting buildings of local historic interest.	+	Policy BILL15 (View to and from St Mary's Church) protects views and the setting of a key historic feature in Billingshurst village.
To conserve and enhance the quality and distinctiveness of the historical and cultural environment of the District	Protect green spaces of value to the community and maintain a high quality natural and historic environment, in particular protecting buildings of local historic interest.	+	Policy BILL8 (Re-Use of Historic Buildings in Billingshurst Village Centre) seeks to ensure that, when bringing buildings of historic value back into active use, it should be sympathetic to its significance and character. Whilst this is actively encouraged for a range of uses, this could potentially discourage owners from bringing buildings back into active use, which could result in them falling further into disrepair.
To maintain and where possible improve on the District's high environmental quality in terms of soil, water, air, noise and odour.	N/a	0	N/a
To minimise flood risk and promote the use of sustainable drainage systems (SuDS).	Ensure that development is sensitively designed to be attractive, to minimise flood risk, mitigate climate change, promote biodiversity and reduce our carbon footprint.	++	Policy BILL14 (Multi-Value Sustainable Drainage Systems) actively promotes SuDS and seeks to ensure that SuDS provision maximises its biodiversity value through creative design.
To reduce water and energy use through efficiency measures and increase the proportion of energy generated from	Ensure that development is sensitively designed to be attractive, to minimise flood risk, mitigate climate change, promote biodiversity and reduce our carbon footprint.	++	Policy BILL14 (Multi-Value Sustainable Drainage Systems) actively promotes SuDS and seeks to ensure that SuDS provision maximises its biodiversity value through creative design and use of features such as rain gardens.

HDPF SA Objective	Relevant Billingshurst Neighbourhood Plan objective(s)	Assessment	Commentary
renewable and low carbon sources.	biodiversity and reduce our carbon footprint.		Policy BILL3 (Energy Efficiency and Design) actively encourages developments to maximise energy efficiency through a range of actions in respect of zero carbon technologies.
To promote the reuse of land, materials and resources through sustainable construction methods. To maximise opportunities for the reduction, reuse and recycling of waste in the District	Ensure that development is sensitively designed to be attractive, to minimise flood risk, mitigate climate change, promote biodiversity and reduce our carbon footprint.	+	Policy BILL3 (Energy Efficiency and Design) encourages development to minimise waste through the development of more energy efficient buildings, e.g. incorporating grey water systems.
To encourage vitality, vibrancy and overall stability within the local economy, including rural areas	Strengthen, support and promote local economic activity in all retail, industrial, commercial and professional activities and ensure they are focused in appropriate areas of the parish.	0	Policy BILL6 (Retaining and Enhancing the Vitality and Viability of Billingshurst Village Centre) seeks to increase the flexibility of what existing buildings in the village centre can be used for. Aim 4 is to identify buildings suitable for co-working/start-up space which will assist micro businesses and those with home businesses. However, this is not a planning policy.
To promote the viability and vitality of existing town and village centres.	Strengthen, support and promote local economic activity in all retail, industrial, commercial and professional activities and ensure they are focused in appropriate areas of the parish.	+	Policy BILL6 (Retaining and Enhancing the Vitality and Viability of Billingshurst Village Centre) recognises the importance of the village centre and its shops and services. It enables a flexible approach so that shops can be used for other uses on a temporary basis, including for cultural, creative and leisure uses. Policy BILL7 (Public Realm and Movement in Billingshurst Village Centre) seeks to protect and enhance the public realm in the village in order to enhance the experience of shopping and leisure activities there.
To reduce the need to travel and improve travel choices through the provision of a range of sustainability transport options,	Improve transport and movement, in particular through non-car modes, specifically ensuring there is a safe environment for pedestrians and cyclists as well as motorists.	++	Policy BILL10 (Protection and Enhancement of Key Movement Routes) identifies a series of routes which should be protected and enhanced for walking and cycling. Policy BILL7 (Public Realm and Movement in Billingshurst Village

HDPF SA Objective	Relevant Billingshurst Neighbourhood Plan objective(s)	Assessment	Commentary
including walking, cycling and public transport			Centre) seeks to enhance the safety and experience for pedestrians using the village centre.